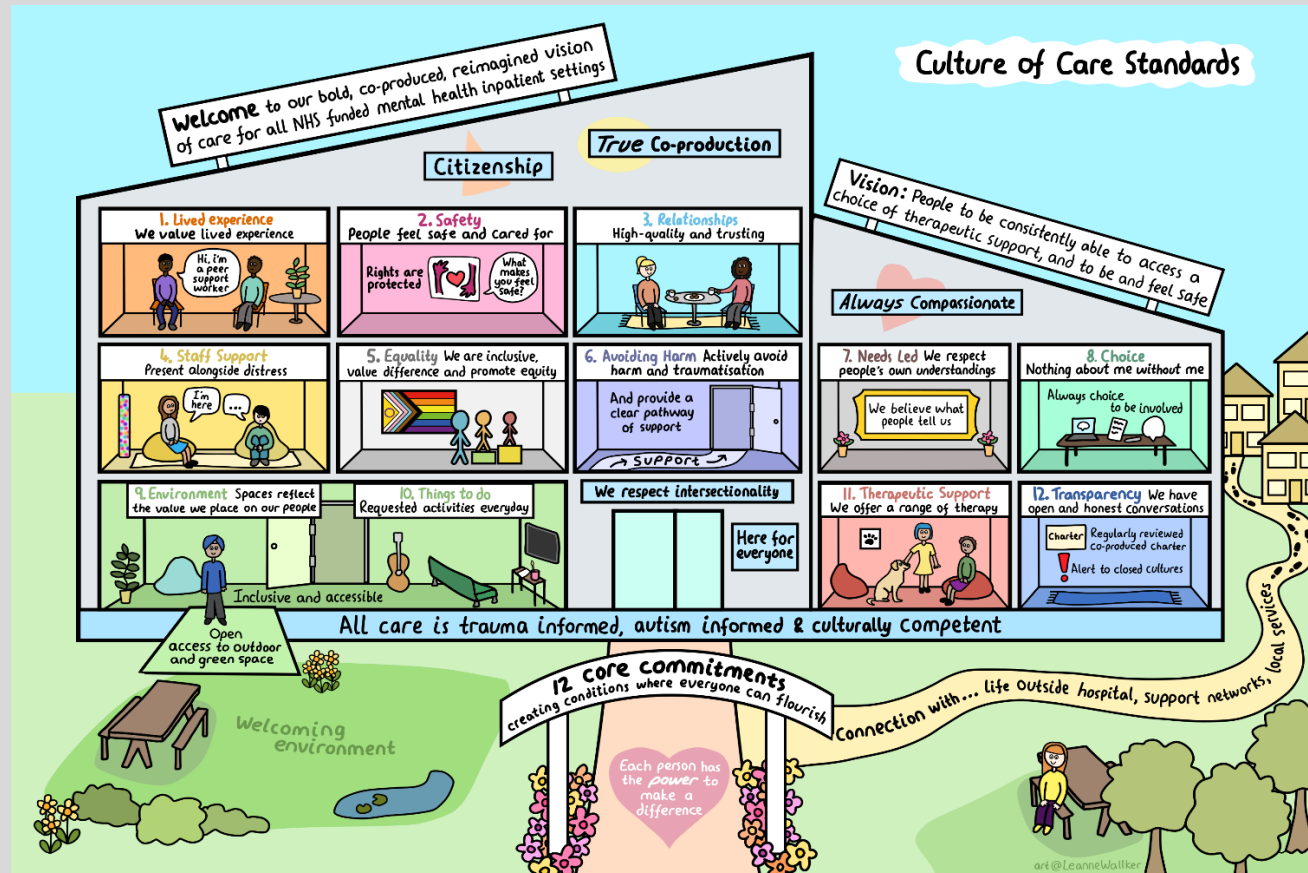
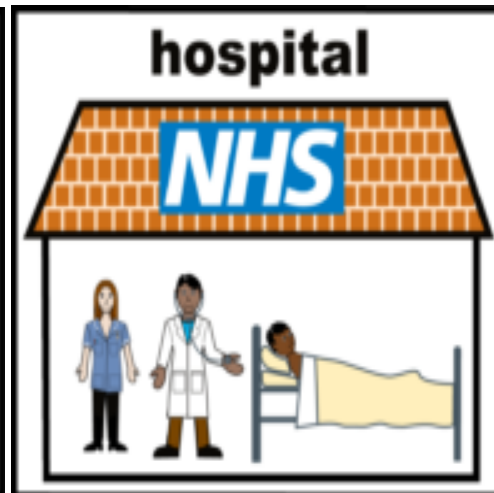


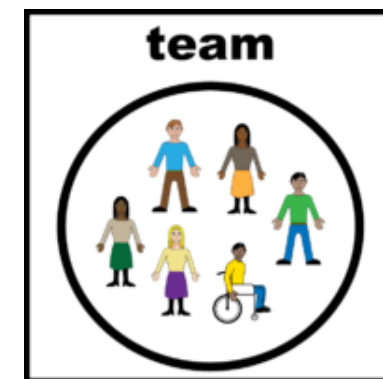
What is the NHS Culture of Care Staff Care & Development Programme?



The NHS Culture of Care Staff Care & Development Programme is trying to help people who are staying in hospital feel safe and cared for.



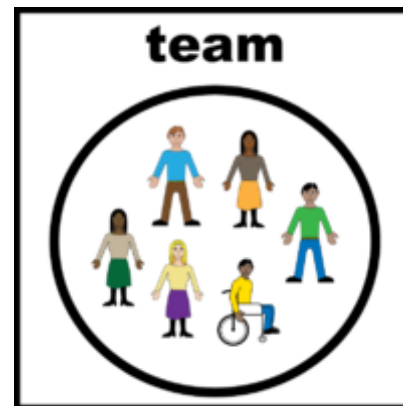
Lots of people are working on this programme.



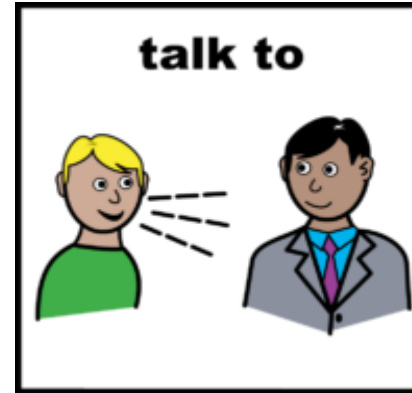
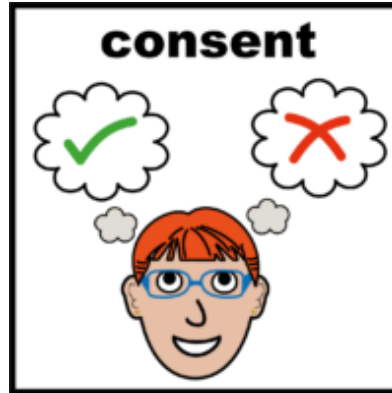
The hospital you are staying in is part of this programme.



A team of people would like to speak to you about how you feel on the ward.



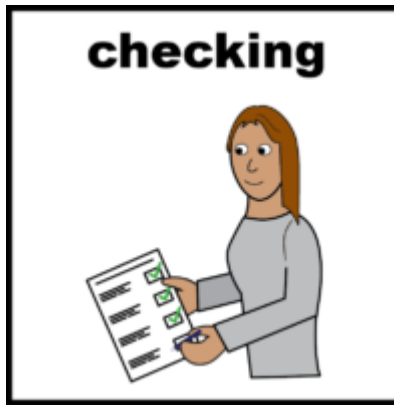
You don't have to talk to the team if you don't want to.



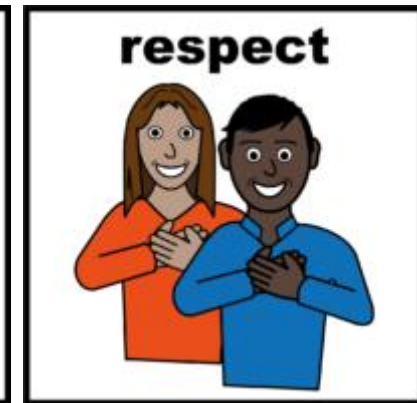
If you want to talk to the team, but need someone with you, that is ok.



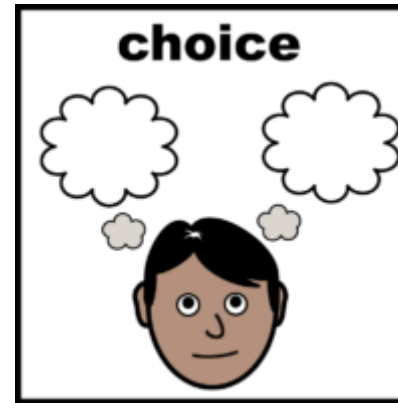
The team are looking at three important parts of being in hospital.



Number 1 is *relational care*, which means how the people in your life on the ward make you feel, and how you feel about them.



Number 2 is *positive informal interactions* on the ward, which means how you are treated every day.



Number 3 is *psychologically safe environment*, which means you can talk about how you feel, and share what you need and want safely, without feeling bad.



Thank you for looking
at this information!

thank you

